

What's New In IceWarp 10.2

With the release of our Unified Communications Server version 10.2, **IceWarp** continues to focus on usability and functionality while providing new features to our customers. We would like to thank our loyal customers for providing valuable feedback and feature requests as it greatly helped shape the development of 10.2.

Here's a look at some of the new features in **IceWarp** Server version 10.2:

WebClient Enhancements:

- **New Unified Login Screen** - Plain HTML rendered, works for all generations of desktop browsers, mobile browsers automatically open the lightweight version. Keep signed-into your preferred interface (advanced, basic, and mobile). Possibility to customize logo and background color.
- **Utilities for Windows** – Located on the WebClient login page and under Tools menu in WebClient, users can download other complimentary software, access their licenses and see the relevant URLs for successful configuration: Basic Calendar, FreeBusy, Internet Calendar or CalDAV. Mac and Linux users have the Windows applications automatically hidden.
- **Time Zone Selection for Events** - Offers all available time zones including Local Time (default), UTC/GMT and Location/City for all major locations around the world. Specifying a time zone allows you to plan or schedule meetings easily and their time will not change when travelling. Directly in WebClient you can convert between your Local Time and other time zone but also between any time zones you already select.
- **Delivery Reports** - Now you can make sure that your email was sent outside of your server and even see an SMTP response error, either live when sending out or retrospectively by right-clicking the message and selecting Delivery Report. A special Delivery Report window is displayed with all recipients (incl. Bcc) and their status:
 - Delivered - message delivered to local recipient
 - Sent - message successfully sent outside / relayed
 - Queue - message still waiting in the queue
 - Error - message was bounced back with an error
- **Search Folders** - Search folders (Formally known as Virtual Folders) were extended to support the new search syntax. This means you can search in all folders now and also specify additional search filter criteria. A typical case would be to create a Search Folder for all emails from a contact or simply search in all mail folders.

What's New In IceWarp 10.2

- **International Domain Names (IDN) Support** - Supports domain names in regional alphabets with diacritics. If an email is sent to such a domain the name will be IDN decoded and successfully delivered. On the other hand if an email is received from such a domain it will be the decoded ASCII transcription, so that you can continue to use the same rules, address book entries, protocol redirects in ASCII decoded xn-- format.
- **New Calendar View** - Month and Week views have a new look and feel, when resizing or moving items it automatically moves the items in collision as you make the move. Selection of items is possible. Each view has a new set of controls corresponding to the current view. You can simply and quickly select the day, month and year you want to see.
- **Improved WebPhone** - Improved stability, support for extra SIP extensions: Replaces (required for Call Pickup), REFER (required for Call Agent), support for Hunt Groups, support for 407 responses to registration requests that some PBX (3CX for instance) require, Display Only SIP Numbers checkbox to ensure that you will call only SIP numbers if there is no SIP gateway or SIP trunk.
- **Invitations on Behalf of Others** - A complete solution for any manager's needs. Create an event and invitation in a shared calendar and it will automatically be sent as the folder owner. Access an invitation in shared Inbox with write permission to the shared calendar and select Accept/Decline. Suggest a new time by simply moving the event (as an attendee in your own calendar), a suggestion email will be automatically sent to the organizer to Accept/Decline the suggested change and automatically reschedule the meeting time if accepted. Repeat until you find the best schedule. Attendees have the option to Become Organizer or delegate to someone else, an organizer change notification will then be communicated to all attendees. An Organizer moving or deleting events automatically reschedules to all attendees without any confirmation. The events just move or disappear in their calendars.
- **Task Participants** - Similar to Meeting Attendees and contains the same Scheduling possibilities. This allows you to set roles and statuses for each attendee easily.
- **New Contacts Selection Dialog** - The dialog for the selection of contacts from address book now follows Outlook: a simple three-edit To, Cc, Bcc controls and easy list of accounts that you can search. Press Up and Down to move in the list, press Enter to select the highlighted contact.

What's New In IceWarp 10.2

- **Server Side RSS - IMAP Integration** - Push all news feeds to the users IMAP mailbox and make them available even for offline reading on smartphones, in Desktop Client, WebClient or in Outlook, without additional software or plugins. The server automatically downloads feeds subscribed in WebClient and converts them to e-mails. Compatibility with Public and Shared folders with ACL permissions allows other users to subscribe to the same set of feeds- the server will download feed updates only once and save the bandwidth and time for the individual users. Stay on top of the latest updates by pushing the RSS feeds folder via ActiveSync. Full WebClient management of feeds (Add, Rename, Delete). Supports RDF (RSS 1.0), RSS 2.0, Atom.
- **Smart Search** - Narrow your search by typing special keywords specific to each folder type. Uses Gmail style keyword syntax, Boolean operators, search grouping and includes keyword auto-suggestion which helps form the correct syntax while listing all available keywords. When typing you not only see available keywords for the folder type but also available names of tags for items in that folder.
- **Internet Calendars Dual Mode** - Private authenticated and Public anonymous options can be used at the same time. External coworkers can get public access to your calendar (<http://server/calendar/?john@doe.com>) so they don't have to login and will only see public events with ACL permissions set to Everyone:Read. Use the private authenticated access (<http://server/calendar/>) to manage your own calendar in applications such as Microsoft Outlook or Apple iCal.
- **Unified Inbox (using Favorites)** - Simply create a Search folder for all of your Inbox folders and drop it to the Favorites section- you will then see all the incoming emails aggregated, with the option to search through all of them with any advanced criteria. Favorites can include any type of folder including Search folders, RSS folders and others can be dragged here for quick access without scrolling in the folder tree.

[Exchange ActiveSync:](#)

- **Tasks as Events** - Keep a record of all your tasks no matter if they have a due date, expired, or not completed. No need to install any 3rd party software for task management and synchronization. IceWarp has the only solution that will display your Tasks on devices that do not support them (iPhone and others) by introducing the new ActiveSync Policy "Sync tasks as events". This feature merges Tasks into your calendar folder and for those that do not have any defined date set then a default one is created. With this basic idea, it was developed and

What's New In IceWarp 10.2

supports complete management of tasks (create, delete, edit). For other applications (WebClient) they are still synchronized as normal Tasks. On your phone they appear as floating events that will get pushed to each new day until completed or due.

- **Palm WebOS, iPhone 4** - Improved compatibility and performance. Outlook and WebClient meeting invitations fully supported, including invitations on behalf of others. GZip support improves the speed of synchronization on slower networks by compressing the traffic.

Outlook Connector 10.2:

- Support for Microsoft Outlook 2010.

Desktop Client 10.2:

- **Client Optimizations** - Support for localized email and GroupWare default folders through XLIST command, improved search functionality, support for custom dictionaries, improved Anti-Phishing controls, better compatibility with WebClient, corrected time zone handling for birthdays and anniversaries, stability and performance optimizations.

IceWarp Core Server:

- **Exchange Migrator Beta** - Can migrate Exchange 2003/2007 (32-bit and 64-bit) from local/remote source to remote/local target, including email, groupware items, attachments of any size (requires 64-bit host Windows OS). Additional migration tools are available for Software 602, Kerio, Axigen and any IMAP/POP server.
- **Minger Server, Domain Sharing (IM, SIP)** – Minger is a new service which implements the Minger protocol RFC draft with caching and multithreading support. Completes the former Distribution Domain concept, which worked only for email. Minger makes it possible to have the same domain across multiple servers (e.g. in distant geographic locations) and keep different sets of accounts in each while being able to reach the other accounts via email, instant messaging and VoIP.
- **Resource Scheduling** - Send notification to manager option makes sure that each iMIP (Invitation) accepted or declined by the resource will not only be sent back to the organizer but also to the manager if enabled. This brings big opportunities to resolve conflicts or oversee the resource management process.

What's New In IceWarp 10.2

- **WebDAV: Mac, iPhone & iPad Support** - Committed to supporting the growing fleet of Apple devices: iCal on OS X 10.6 is now fully supported including access to shared calendars, invitations, free busy data and more. iPhone and iPad users can synchronize their calendars via CalDAV and contacts via CardDAV, included with each version 10 license (ActiveSync recommended for best user experience). WebFolders now compatible with Finder through Content-Encoding: Chunked.
- **Service Logs** - Improved and more detailed logging of IMAP, Control FastCGI, SIP calls, Anti-Spam Reports, Anti-Spam Mail-From: vs. MIME From:, Anti-Spam LIVE score, Minger server, SMTP evaluation of content filters. File System Maintenance logs now defaults to on.
- **Milter Support** - Milters (mail filters) used in qmail and postfix can be implemented as external content filters without changes, which can be handy for example after migration or for special purposes.

Administration Interface:

- **Copy Button** - Use the Copy button to inherit values from another preset configuration. This option is available in many places including Rules, Content Filters, Web Service hosts, SSL Tunnels, SIP Dial Plan, FTP and SMS accounts, IM/SIP Gateways and elsewhere beside the Add/Edit/Delete buttons.
- **Consolidated Services and Logging Tab** - Logs tab was moved to Services list so now logging can be enabled on the same tab as the services themselves. The "Others" tab was moved, its content is now under Properties and is specific for the service. Service state, log level, service executable, statistics and sessions are readily available in one screen. Multi-select is supported for setting the logging level. Each service node has a Start/Stop button too (instead of their former Active checkbox).
- **Certificate Management** - In one step you can create a certificate request (CSR), submit to validate the request and purchase the certificate, then import the signed public certificate and set it as default certificate instantly. Chained certificates are sorted in the correct order and their validity verified automatically with no manual intervention by the customer. Browsers and other TLS/SSL clients verify such certificates as completely trusted. 100% compatible with IceWarp CA issued certificates or other providers, works also with self-signed certificates.

For more information on Icewarp SSL Certificates please view our User Manual located below.

What's New In IceWarp 10.2

http://esupport.icewarp.com/index.php?_m=downloads&_a=viewdownload&downloaditemid=11

Voice Server (SIP/VOIP):

- **Dial Plan** - Dial Plan has replaced the former Rules tab, similar to configuration of a PBX. Each Dial Plan rule contains Number, RegEx checkbox, action Type, Target and Forwarding information.
- **Hunt Groups** - Forward the call to as many concurrent targets as you have registered. The forwarding controls take effect and all the targets ring simultaneously.
- **Circular Hunting** - Similar to hunt groups but targets ring via the round robin mechanism. Only one target rings at a time and they are changed for each new call. Targets are expanded meaning you can even combine hunt groups and circular hunting if hunt groups are defined on upper level.
- **Set Call Forwarding** - Used for former Special Numbers. The target specified defines what happens, if blank the forwarding is deleted, if set the forwarding is created, if set to a non-existing target, an away mode is created.
- **Gateways_** - Support for URI To: header request, using a single VoIP account but routing multiple numbers to this account. Create an outgoing gateway call from an incoming gateway call. Put multiple Contact: headers to help you to define all URIs so incoming calls will be routed to the gateway properly, even if VoIP provider ignores your Contact: header, contacts using a different URI or even multiple URIs. Smart loop detection ensures if domains and hosts are incorrectly configured the server does not loop. Gateway responses preserve the original REALM, FROM and TO headers, which means full compatibility with all VoIP clients, including Windows Mobile VoIP client, 3CX, SipDroid, Acrobats and others.
- **Redial Last Number** - Redials the last received or dialed.
- **Call Pickup** - Set the action in a custom rule and use wildcards for a specified target to pickup any incoming call. Then when you hear a ringing phone somewhere, dial the number of the rule you just created and the call will be automatically transferred to your handset.

What's New In IceWarp 10.2

- **Improved IP Detection** - SOCKS and VoIP external IPs are automatically determined and you do not need to set them manually while configuring the server for the first time.
- **Devices** - Define phones that will authenticate to SIP as standalone SIP accounts. Setup a phone only once and then change the user it should be linked to. If you move the phone to someone else you then just change the user on the device listed in Icewarp and do not need to change the settings of the phone itself.
- **Users** - A way to create service specific accounts just like with SMS and FTP outside of system accounts. In this tab you can define all VoIP extensions and groups that can be used in the dial plan or linked with devices. It's possible to define Call Forwarding and Caller ID on the user/device level.
- **Simplified PBX Integration** - All you need to do is create a new SIP gateway to the 3rd party PBX, specify the outgoing rule such as: Number: .*, Regex: True, URI is not registered: True. This makes sure that any calls to other numbers not locally registered will be routed to the PBX.
- **Support for External URL Dialing** - In WebPhone (and in refer.dat of the mailbox) you can specify an external SIP server to use for Call Now functionality, either a SIP address or URL of an external HTTP script, such as: <http://mypbx/call.php?number=%number%>.

IceWarp Unified Communications Server Version 10.2 Images

❖ New WebClient Interface



What's New In IceWarp 10.2

❖ WebClient Utilities

[Windows](#) | [Linux](#) | [Mac](#)

IceWarp Desktop Client



Desktop Client stands as a replacement of Microsoft Outlook for email, groupware and instant messaging.

 [Download Desktop Client](#)

IceWarp Outlook Connector



Outlook Connector is needed to use sharing and other advanced features of Microsoft Outlook.

 [Download Outlook Connector](#)

 [Outlook Connector Guide](#)

IceWarp Notifier

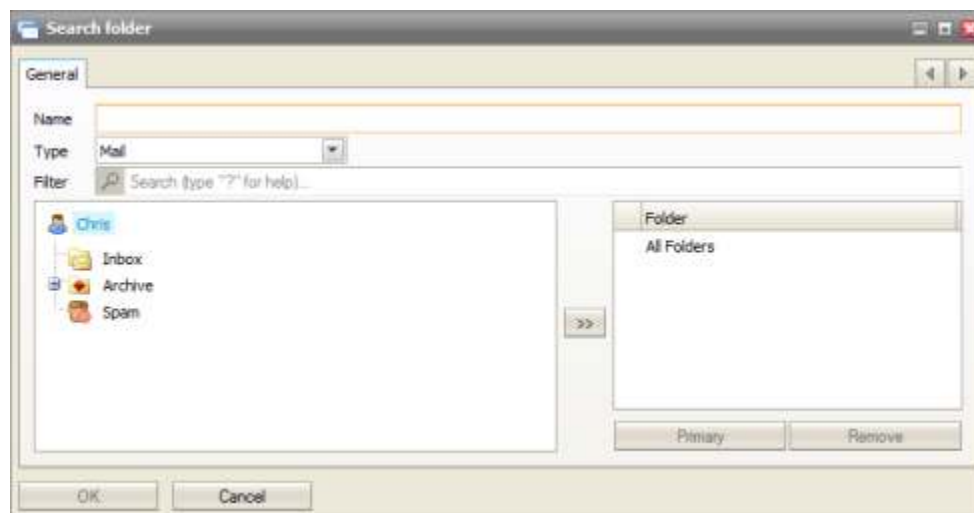


Notifier integrates the IceWarp WebClient as the default Windows mail client and provides email notification.

 [Download Notifier](#)

 [Notifier Guide](#)

❖ Search Folders

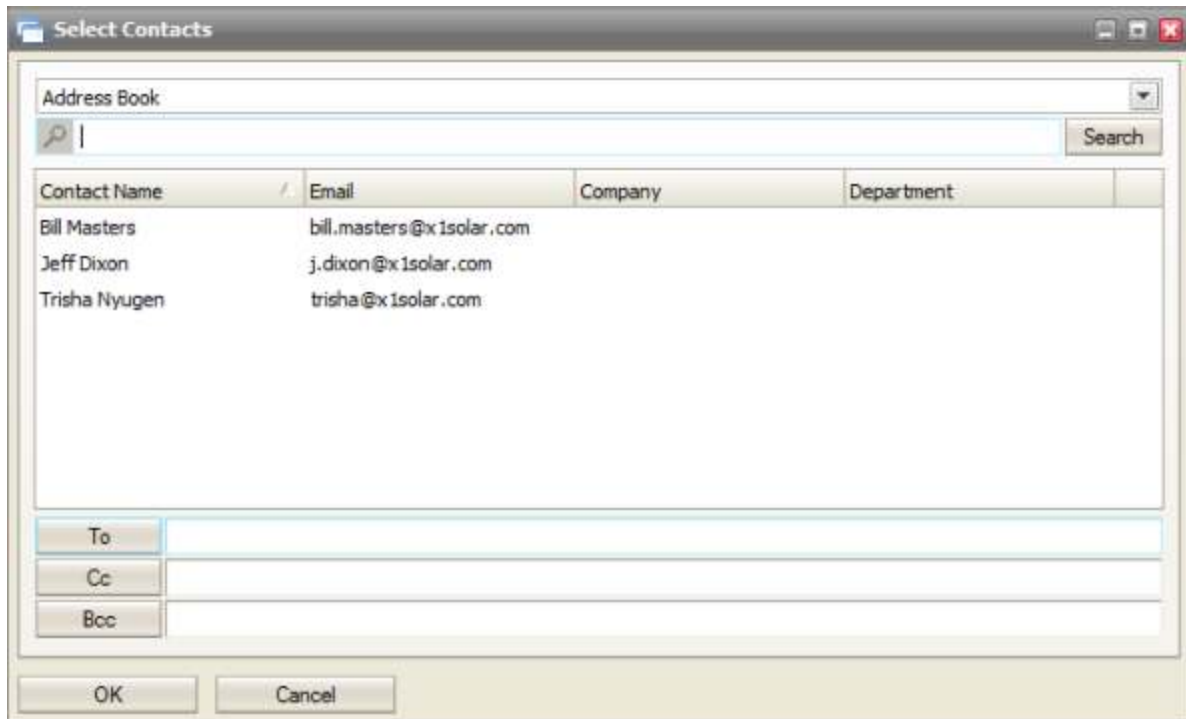


What's New In IceWarp 10.2

❖ Delivery Reports In WebClient



❖ Contact Selection (when composing Message)



What's New In IceWarp 10.2

❖ WebClient Smart Search

after: Search for messages sent after a period of time (after:2004/04/16)
bcc: Used to specify recipients in the bcc: field
before: Search for messages sent before a period of time (before:2004/04/16)
cc: Used to specify recipients in the cc: field
from: Used to specify the sender (from:Amy)
fulltext: Searches the body of messages (fulltext:test)
greater: Search depending on size in kB (greater:1024)
has:attachment Search for messages with an attachment
is:flagged Search for messages that are flagged
is:read Search for messages that are read
is:unread Search for messages that are unread
keyword: Search for items with specified tag (tag:Business)
priority: Search by priority highest,high,normal,low,lowest (priority:high)
smaller: Search depending on size in kB (smaller:1024)
sms: Used to specify recipients in the sms: field
subject: Search for words in the subject line (subject:dinner)
tag: Search for items with specified tag (tag:Business)
to: Used to specify a recipient (to:david)

❖ New Services Layout (Logging Included)

Services						
General SmartDiscover						
Name	Status	Logging	Module	Running Time	Connections	Memory
Communication						
SMTP	Running	Debug	SMTP	3.08 Days	0	64.83 MB
POP3	Running		POP3	3.08 Days	0	7.29 MB
IMAP	Running		POP3	3.08 Days	0	7.30 MB
Web	Running		Control	3.08 Days	0	14.14 MB
FTP	Running		Control	3.08 Days	0	14.15 MB
Instant Messaging	Running		IM	3.08 Days	0	14.29 MB
SMS	Running	Extended	Control	3.08 Days		14.14 MB
VoIP	Running	Extended	IM	3.08 Days	1	14.29 MB
SOCKS	Running		Control	3.08 Days		14.14 MB
Minger	Running		Control	3.08 Days		14.14 MB
LDAP	Running		Control	3.08 Days		14.14 MB
SNMP	Running		Control	3.08 Days		14.14 MB
Collaboration						
GroupWare	Running		GW	3.08 Days	0	8.15 MB
GroupWare Notific...	Running		Control	3.08 Days		14.14 MB
WebClient	Running	Debug	Control	3.08 Days		14.14 MB
WebDAV	Running		Control	3.08 Days		14.14 MB
Security						
Anti-Spam	Running	Debug	SMTP	3.08 Days		64.83 MB
Anti-Virus	Running	Debug	SMTP	3.08 Days		64.83 MB
Proxy	Running		Control	3.08 Days		14.14 MB
Mobility						
ActiveSync	Running		Control	3.08 Days		14.14 MB
SyncML	Running		Control	3.08 Days		14.14 MB